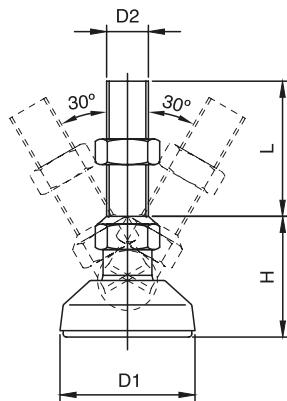


## 4.516.001

NAME	COMPONENTS		MATERIAL		
Adjustable foot	Screw		Steel zinc plated		
	Base		Steel zinc plated with rubber from below		
CATALOGUE NO.	D1	D2	H	L	LOAD
4.516.001.XXX	40	M10	21	100,150	200kg
4.516.002.XXX		M12	23	100,150	300kg
4.516.003.XXX		1/2"	23	100,150	300kg
4.516.004.XXX	60	M12	30	100,150	300kg
4.516.005.XXX		M16	32	100	500kg
4.516.006.XXX		1/2"	30	50,100	300kg
4.516.007.XXX		5/8"	32	100	500kg

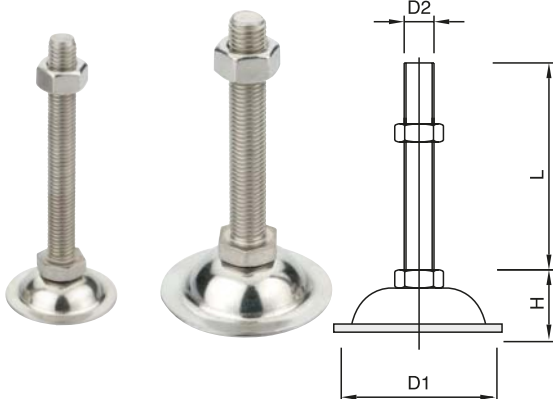
: where XXX=L



## 4.517.001 with movable screw

NAME	COMPONENTS		MATERIAL		
Adjustable foot	Screw		Steel zinc plated		
	Base		Polyamide		
CATALOGUE NO.	D1	D2	H	L	LOAD
4.517.001.XXX	65	M16	39	150	300kg
4.517.002.XXX		M16	39	100	300kg
4.517.003.XXX		5/8"	39	100	300kg

: where XXX=L



## 4.518.001

NAME	COMPONENTS		MATERIAL		
Adjustable foot	Screw		Stainless steel 304		
	Base		Stainless steel 304		
CATALOGUE NO.	D1	D2	H	L	LOAD
4.518.001.XXX	50	M10	18	50, 100	150kg
4.518.002.XXX		M12	20	50, 75, 100	200kg
4.518.003.XXX		1/2"	20	50, 75, 100	200kg
4.518.004.XXX	70	M12	27	50, 75, 100, 150	300kg
4.518.005.XXX		M16	30	50, 75, 100, 150	400kg
4.518.006.XXX		1/2"	27	50, 75, 100	300kg
4.518.007.XXX		5/8"	30	100	400kg

: where XXX=L