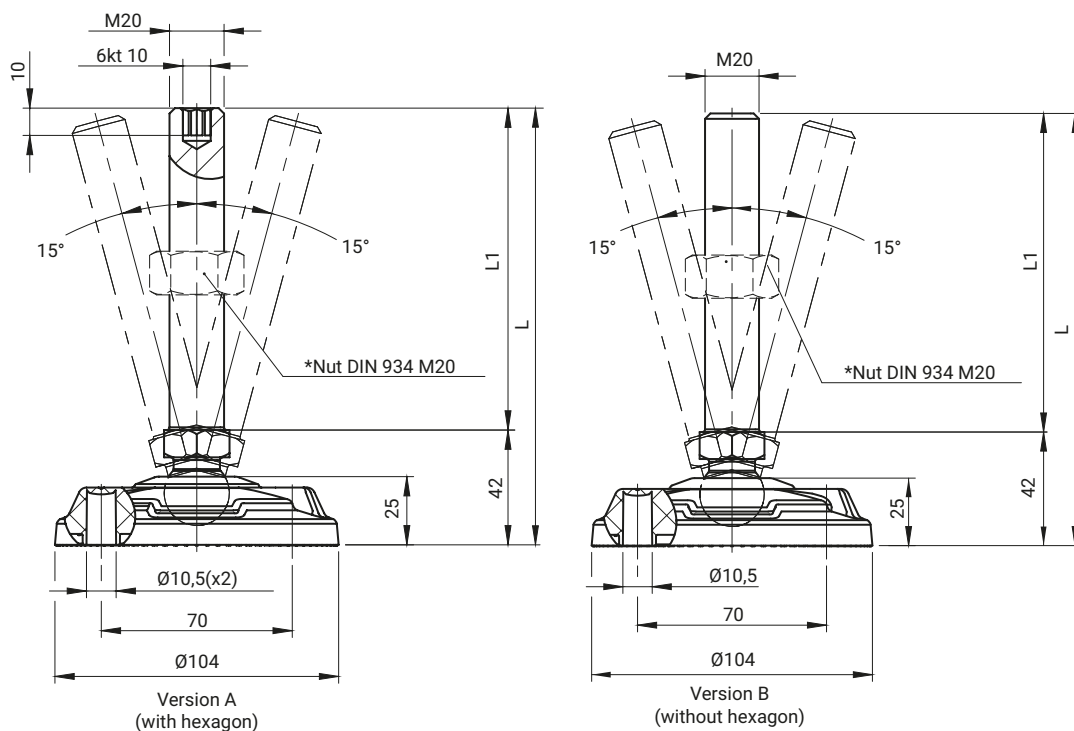


Swivel foot with bolt connection 4.519

Anti-skid pad 4.519.100



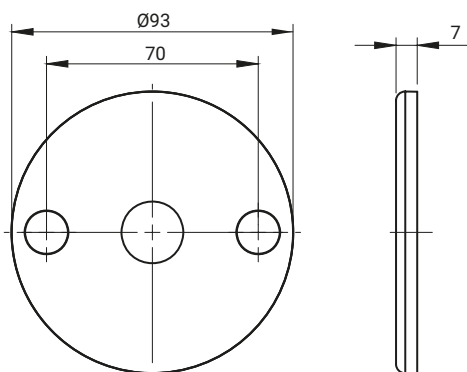
Instructions for anchoring the foot to the ground

* - not included in the scope of delivery, must be ordered separately

The adjustable feet are supplied dismounted for easier transport and storage (assembly by hammering with a rubber hammer).



NAME	COMPONENTS	MATERIAL	MAXIMUM LOADING STATIC LOAD [N]	MAXIMUM LOADING STATIC LOAD [kg]
Rate	Screw	Stainless steel		
	Base	PA6 GF30		
CATALOGUE NO.	VERSION	L		
4.519.001.001	A	140	28000	2800
4.519.001.002	B			
4.519.002.001	A	160	28000	2800
4.519.002.002	B			
4.519.003.001	A	180	28000	2800
4.519.003.002	B			
4.519.004.001	A	200	28000	2800
4.519.004.002	B			



CATALOGUE NO.	COMPONENTS	MATERIAL
4.519.100	Anti-skid pad	NBR

* The anti-skid pad 4.519.100 works with the oscillating feet 4.519

* The anti-skid pad 4.519.100 is not included in the scope of delivery, must be ordered separately.