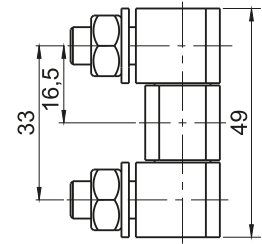
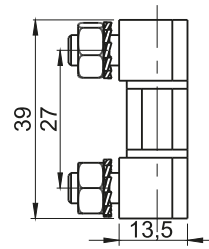
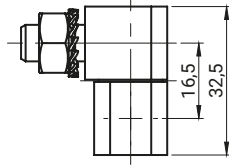
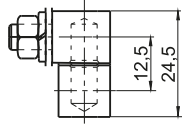
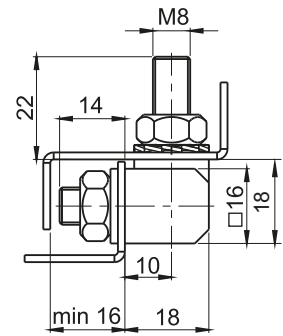
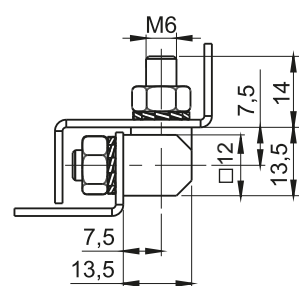
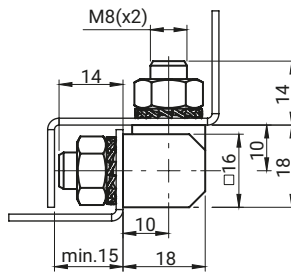
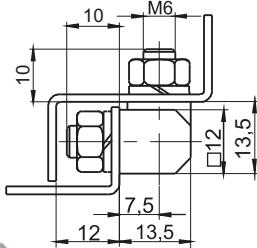


Hinge 3.STZH2, 3.STZH2.002, 3.STZH3 3.STZH3-1, 3.ST53, 3.ST73

stainless steel



NEW



3.STZH2.001

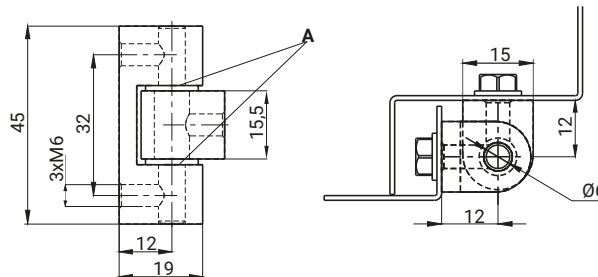
3.STZH2-1.001

3.STZH3.001

3.STZH3-1.001

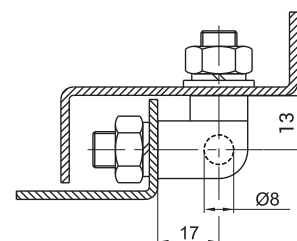
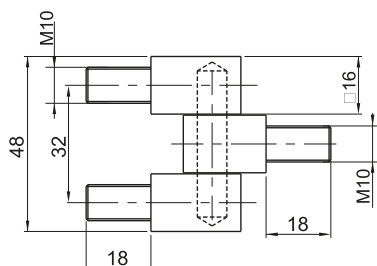
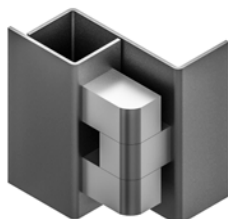
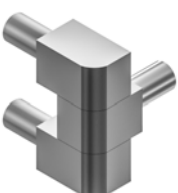
* DIN 934 nuts and DIN 6798 washers are included in the scope of delivery.

CATALOGUE NO.		COMPONENTS	MATERIAL
3.STZH2.001 3.STZH2-1.001	3.STZH3.001 3.STZH3-1.001	Holder, Base, Pin	Steel zinc plated
3.STZH2.001SN 3.STZH2-1.001SN	3.STZH3.001SN 3.STZH3-1.001SN	Holder, Base, Pin	Stainless steel



A - plastic washer

CATALOGUE NO.	COMPONENTS	MATERIAL	FINISH [C]	
			Chrome	RAL9005
3.ST53.001	Holder, Base	ZAMAK 5	01	04
	Pin	Stainless steel	-	-
3.ST53.002	Holder, Base	Steel	01	04
	Pin	Stainless steel	-	-



CATALOGUE NO.	COMPONENTS	MATERIAL
3.ST73.001	Holder, Base, Pin	Steel zinc plated