
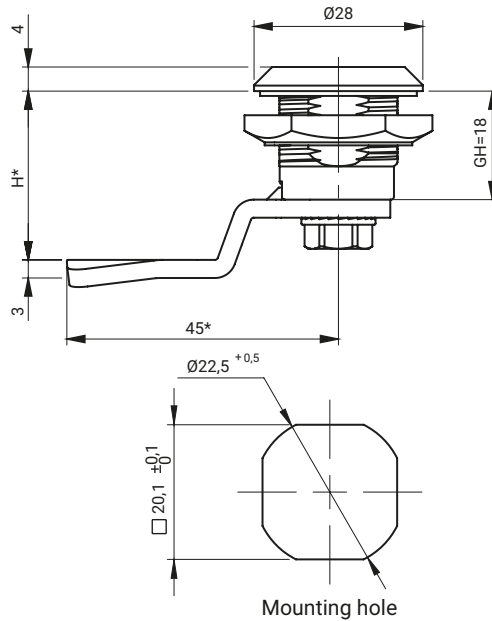


IP65

IP66**



EN 45545-2
for stainless steel version



FINISHING TYPE OF THE INSERT AND THE BODY [C]

ZAMAK 5							Polyamide		Stainless steel	
Chrome	Nickel	Galvanized	RAL 9005	RAL 7035	KTL****	No coating	RAL 9005	RAL 7035	304	316
01	02	03	04	05	06	00	07	08	9.1	9.2

THE TYPE OF THE NUT [N]

	ZAMAK 5	Polyamide	Steel	Stainless steel	
				304	316
Nut without grounding	11	12	13	14	15
Nut with grounding	21	-	23	24	25

TYPE OF THE MATERIAL OF THE INSERT	INSERTS [X]												
ZAMAK 5	●	●	●	●	●	●	●	●	-	●			
Polyamide	●	●	-	●	●	●	-	-	-	-	***		***
Stainless steel	304	●	●	●	●	●	-	-	●	-			
	316	●	●	●	●	●	-	-	●	-			

- * Possibility to order in another dimension
- ** Lock for special request.
- *** Precise description of inserts M11, M12, M2 check pg. 2A-10
- **** applies only to the body



where C, N, G stand for:
 C - type of the material and finishing of the surface
 N - type of nut
 H.G - the cam unbending dimension

Notice:
 The lock is fitted with cams from the group: 12, 14, 17, 17A, 18, 32, 34, JK1-16018, JK2-16018, J-6000.03, J-6000.04, JK-1610.01, JZ-002 (pg. 1C-10 to 1C-23)