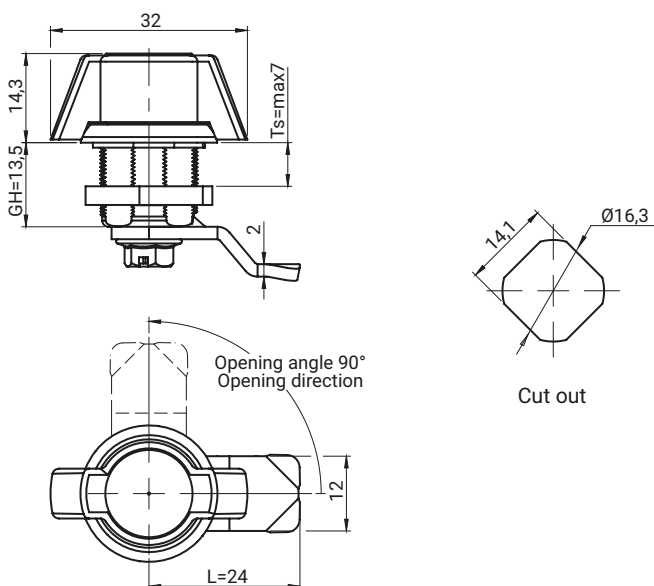


Note: The lock is mounted with the key code 2233X
* possibility to order in another dimension

| CATALOGUE NO. | COMPONENTS | MATERIAL | FINISH [C] | |
|---------------|------------|-------------------|------------|----------|
| | | | Chrome | RAL 9005 |
| 2.616.001-H | Housing | ZAMAK5 | - | 04 |
| | Cam | Steel zinc plated | - | - |
| 2.616.101-H | Housing | ZAMAK5 | 01 | - |
| | Cam | Steel zinc plated | - | - |



* possibility to order in another dimension

| CATALOGUE NO. | COMPONENTS | MATERIAL | FINISH [C] | |
|---------------|------------|-------------------|------------|----------|
| | | | Chrome | RAL 9005 |
| 2.616.002-H | Housing | ZAMAK5 | - | 04 |
| | Cam | Steel zinc plated | - | - |
| 2.616.102-H | Housing | ZAMAK5 | 01 | - |
| | Cam | Steel zinc plated | - | - |

How to order:

