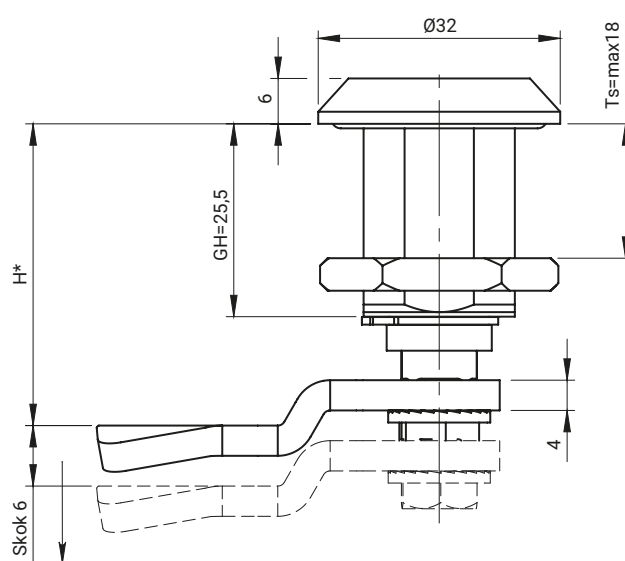


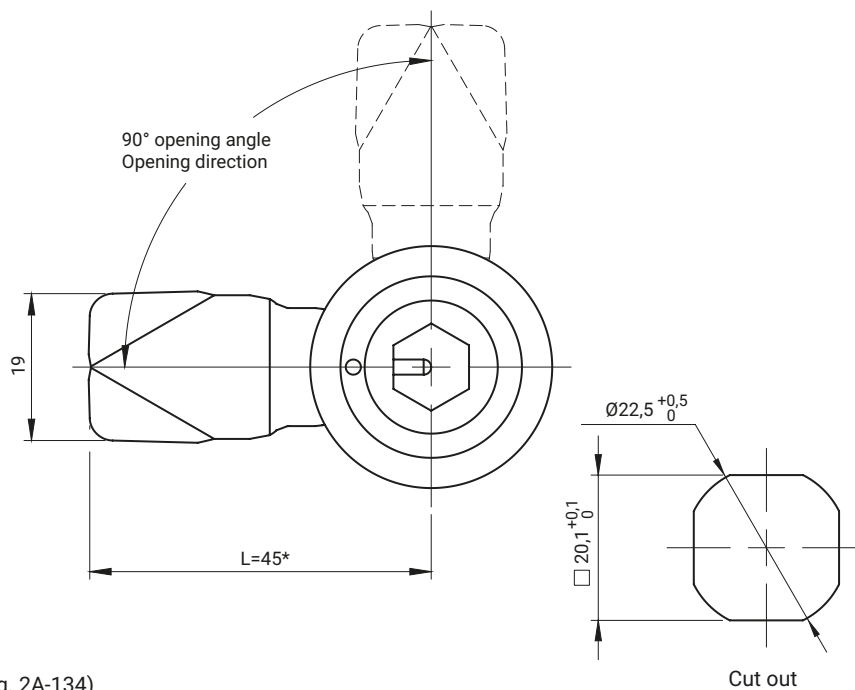
Pressure Lock 2.M22SD35





HEX10



HEXB8W



Lock works with key Key 2.KL.X.014 (pg. 2A-134)

TYPE OF LOCK	INSERT [X]	COMPONENTS	MATERIAL
M22SD35	 	Housing, Insert, Cam	Stainless steel (AISI 316)
	HEX10 HEXB8W		

How to order:

Type of lock
 Type of insert [X]
 The height of cam H



where:

H - the cam unbending dimension
 G - cam group
 Ts - door thickness

The lock is fitted with cams from the group: 16, 21, 36, JK1-10018SN, JK2-10018SN, J-6000.01SN, J-6000.02SN, JK-1610.01SN (pg. 1C-12 to 1C-21)

* possibility to make in another dimension