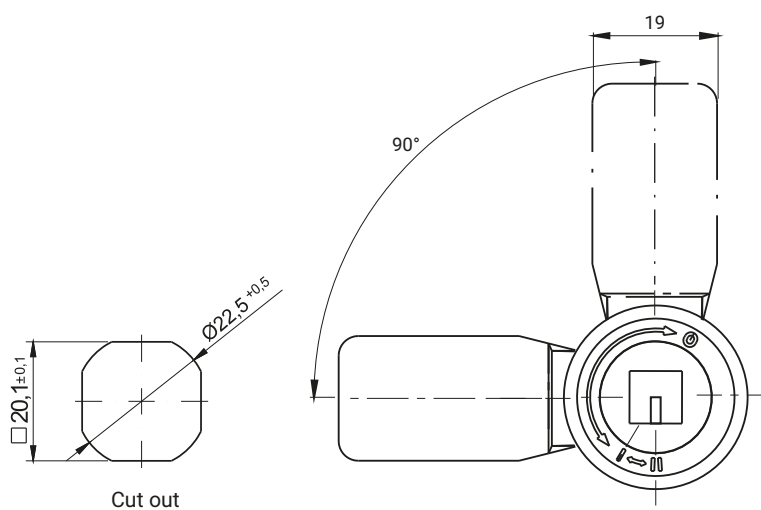
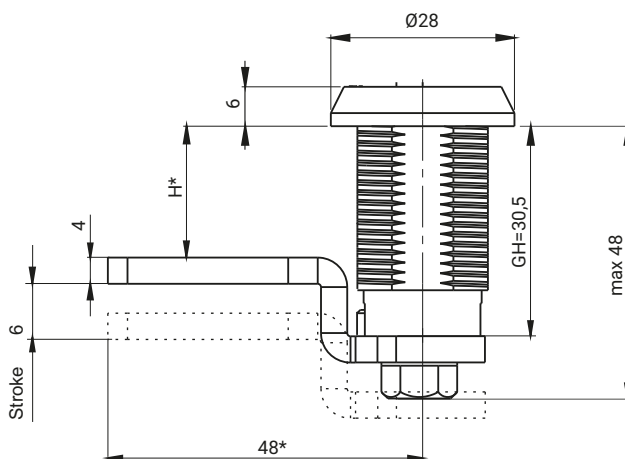


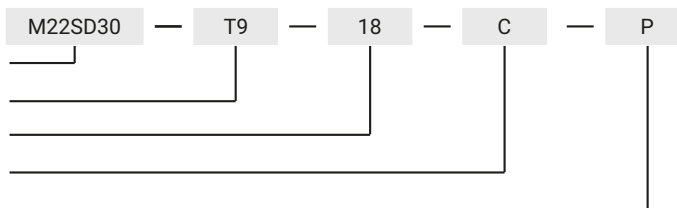
LH/RH



INSERT [X]					FINISH [C]	
					Chrome	
T9	KW8	S	N	RAILWAY	01	
TYPE OF LOCK			COMPONENTS		MATERIAL	
M22SD30			Housing, Insert		ZAMAK 5	
			Cam		Steel zinc plated	
M22SD30-SN			Housing, Insert, Cam		Stainless steel	

How to order:

- Type of lock
- Type of insert
- Height cam H = 18, 20, 22
- Finish
- Lock version (P-Right, L-left)



* possibility to make in another dimension