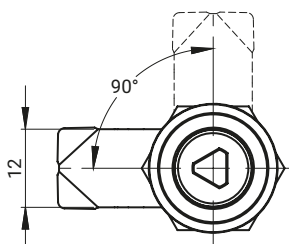


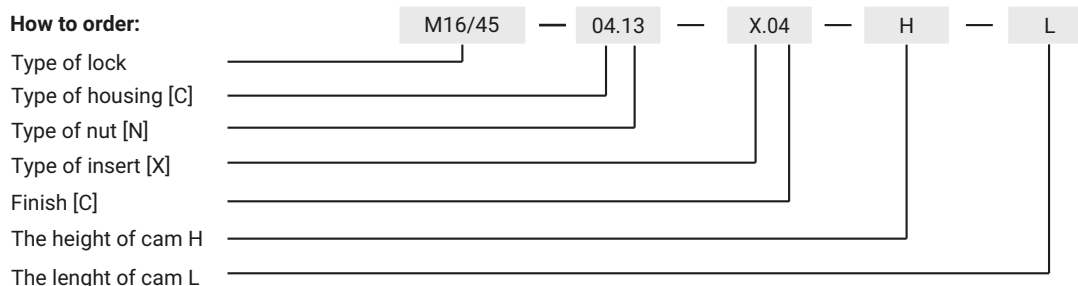
for stainless steel version



MATERIAL	INSERTS [X]						
ZAMAK 5	●	●	●	●	-	●	●
Brass	●	-	-	-	●	-	-
Stainless steel	●	●	●	●	●	●	●

TYPE OF LOCK								
M16					M16/45			
MATERIAL TYPE FOR HOUSING AS WELL AS PROTECTIVE COATING FOR HOUSING AND INSERT [C]								
ZAMAK 5						STAINLESS STEEL		BRASS
Chrome	Nickel	Zinc plated	RAL 9005	RAL 7035	No coating	304	316	
01	02	03	04	05	00	9.1	9.2	10
TYPE OF NUT [N]							STAINLESS STEEL	
Steel							304	316
13							14	15

How to order:



Available height of cam H = 13,5; 20

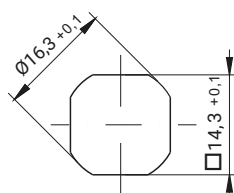
Available length of cam L = 23; 25

For the housing made of stainless steel, the insert is also made of the same material

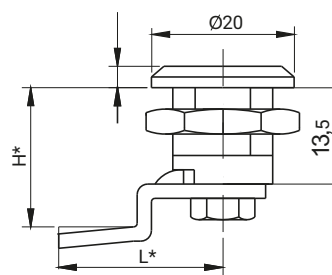
* Possibility to order in a different dimension meaning:

C - marking of material for housing as well as surface finish for housing and insert

H.G - cam bended dimension



Cut Out



INSERT [X]	FINISH [C]
	RAL 9005
SK	04

TYPE OF LOCK	COMPONENTS	MATERIAL
2.602.001	Housing, insert	ZAMAK 5
	Cam	Steel zinc plated