

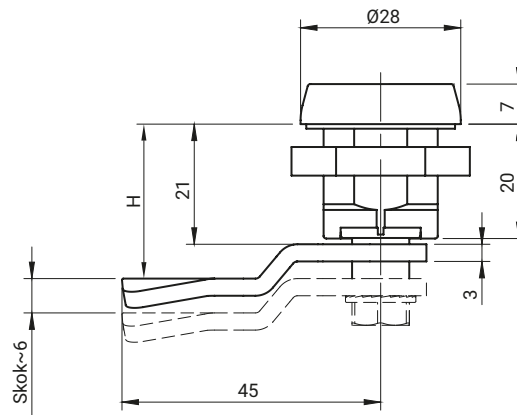
Lock M22SD20SN



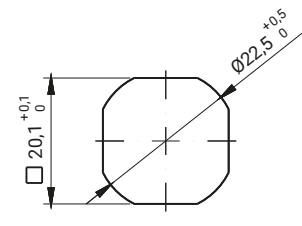
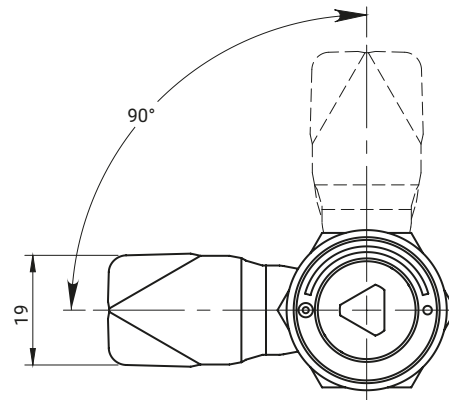
for stainless steel version



M22SD20SN



M22SD20SN.C



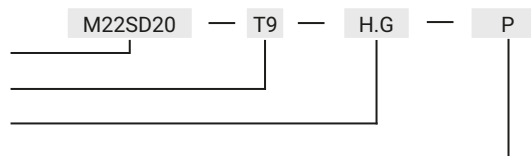
Cut out

The drawing shows the right-hand version of the lock.
The left-hand version is a mirror reflection of the right.

TYPE OF LOCK	INSERTS [X]			COMPONENTS	MATERIAL
M22SD20SN M22SD20SN.C				Housing, Insert, Cam	Stainless steel
	RAILWAY	KW8	T9		

How to order:

Type of lock
Type of insert [X]
Locking height
Version (L-left, P-right)



where:

H - locking height
G - cam group

The lock is fitted with cams from the group: 16, 21, 36, JK1-10018SN, JK2-10018SN, J-6000.01SN, J-6000.02SN, JK-1610.01SN (pg. 1C-12 to 1C-21)