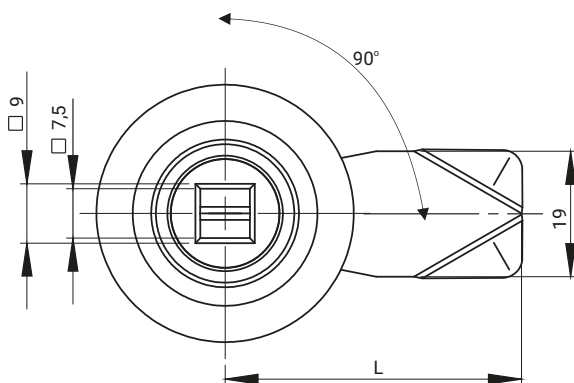
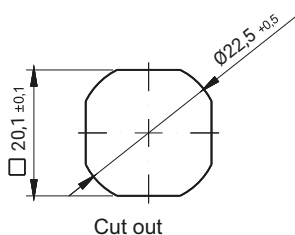


M22TR



M22TR.C



The lock in accordance to NF F 01-054 standard.

The lock has a strength test on opening and closing process and also tests describing the impact of vibration according to EN 61373 standard.

Washer M22 DIN 125 A included.

TYPE OF LOCK	COMPONENTS	MATERIAL	INSERTS [X]	
M22TR	Housing, insert	Stainless steel 304		
M22TR.C	Cam	Stainless steel 304	T9	KW8

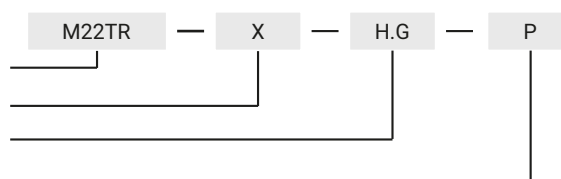
How to order:

Type of lock

Type of insert

Height cam H

Version (L- left, P-right)



where H.G - the cam unbending dimension

The lock is fitted with cams from the group: 14, 17A, 34, JK1-16018SN, JK2-16018SN, J-6000.03SN, J-6000.04SN, JK-1610.01 (pg. 1C-10 to 1C-21)