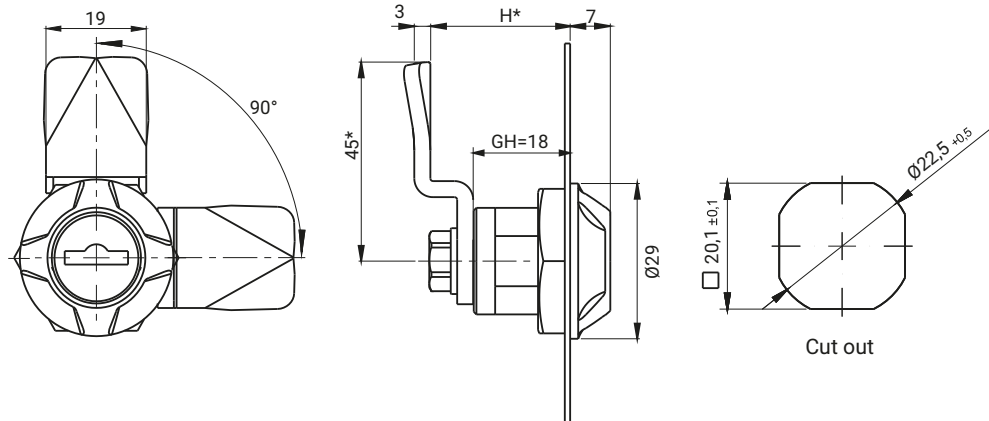
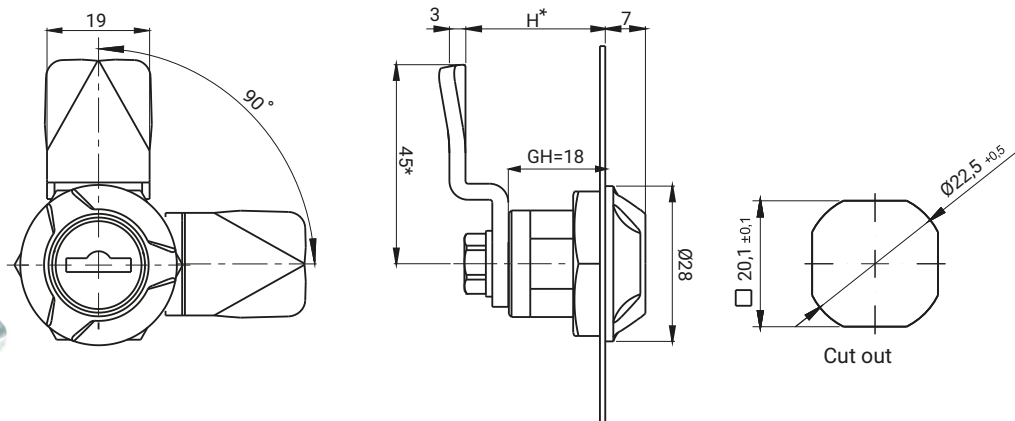


LH/RH



LH/RH



KEY CODE						FINISH [C]			
						Chrome	Nickel	RAL 9005	RAL 7035
1333	405E	455E	1242E	2432E	RK	01	02	04	05
TYPE OF LOCK			COMPONENTS			MATERIAL			
M22EW			Housing			ZAMAK 5			
			Cam			Steel zinc plated			

KEY CODE						FINISH [C]			
						Chrome	Nickel	RAL 9005	RAL 7035
1333	405E	455E	1242E	2432E	RK	01	02	04	05
TYPE OF LOCK			COMPONENTS			MATERIAL			
M22FW			Housing			ZAMAK 5			
			Cam			Steel zinc plated			

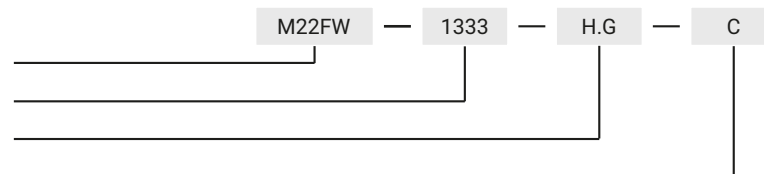
**How to order:**

Type of lock

Key code

Height cam H

Finish



\* possibility to make in another dimension

The lock is fitted with cams from the group: 15, 16, 19, 21, 35, 36, JK1-10018, JK2-10018, J-6000.01, J-6000.02, JK-1610.01, JZ-001 (pg. 1C-12 to 1C-23)