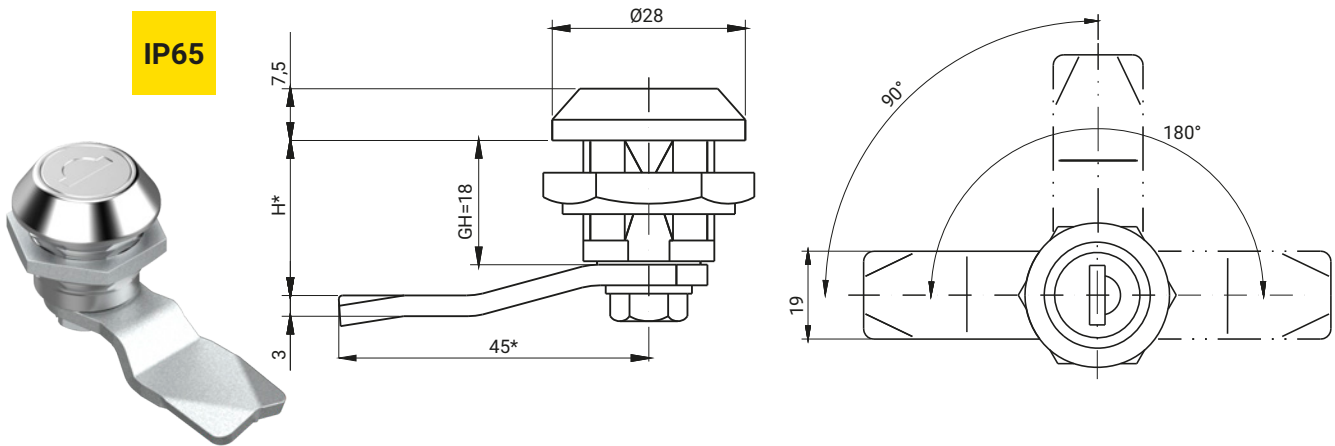


IP65



The lock has an additional seal providing IP65

| KEY CODE | | | | | | FINISH [C] | | | | |
|--------------|------|------|------------|-------|----|-------------------|--------------|-------------|---------------|---------------|
| 1333 | 405E | 455E | 1242E | 2432E | RK | Chrome 01 | Nickel 02 | Zn ** 03 | RAL9005 04 | RAL7035 05 |
| TYPE OF LOCK | | | COMPONENTS | | | MATERIAL | | | | |
| M22W | | | Housing | | | ZAMAK 5 | | | | |
| | | | Cam | | | Steel zinc plated | | | | |

How to order :

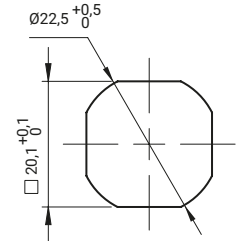
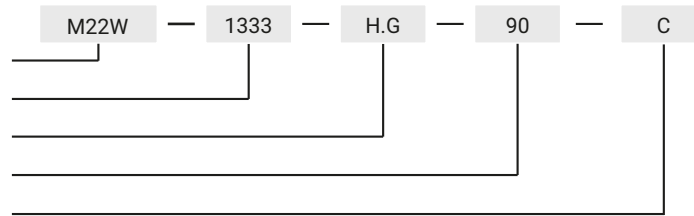
Type of lock

Key code

Height of cam H

The opening angle of (90°, 180°)

Finish



Cut out

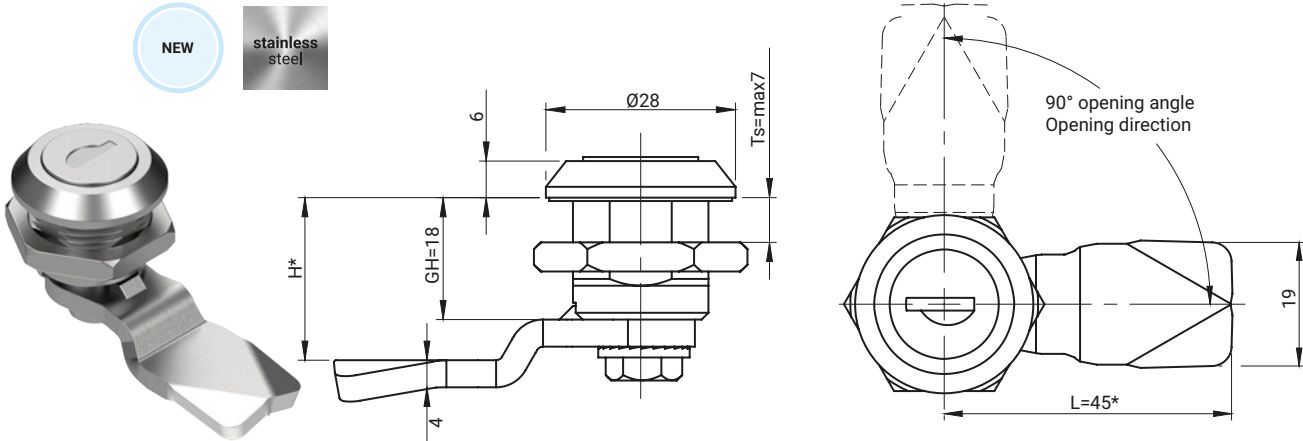
* possibility to make in another dimension

** galvanized

The lock is fitted with cams from the group: 15, 16, 19, 21, 35, 36, JK1-10018, JK2-10018, J-6000.01, J-6000.02, JK-1610.01, JZ-001 (pg. 1C-12 to 1C-23)

NEW

stainless steel



| TYPE OF LOCK | COMPONENTS | MATERIAL |
|--------------|----------------|---------------------------|
| M22WSN | Housing, Latch | Stainless steel (ASI 316) |

How to order:

Type of lock

Key code

The height of cam H

where:

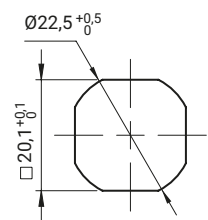
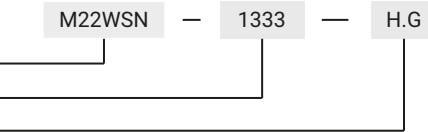
H - the cam unbending dimension

G - cam group

Ts - door thickness

The lock is fitted with cams from the group: 14, 17A, 34, JK1-16018SN, JK2-16018SN, J-6000.03SN, J-6000.04SN, JK-1610.01 (pg. 1C-10 to 1C-21)

* possibility to make in another dimension



Cut out