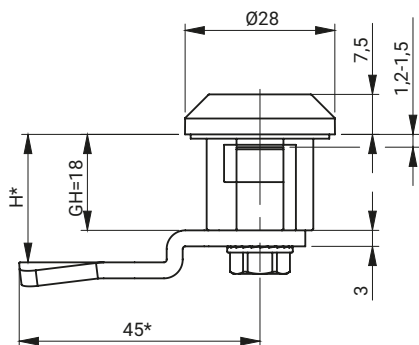
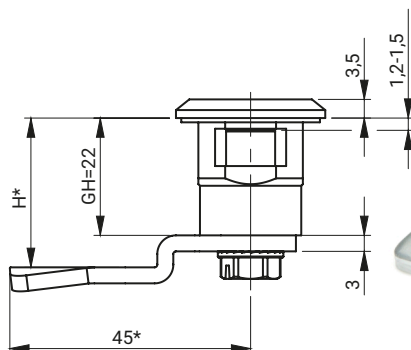
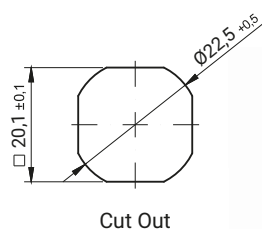
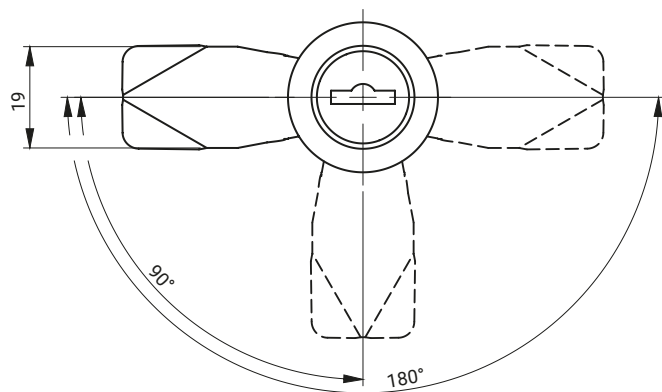


M22ZW



M22ZW22


M22ZW


Cut Out


M22ZW22

KEY CODE						FINISH [C]	
1333	405E	455E	1242E	2432E	RK	RAL 9005	RAL 7035
						07	08
TYPE OF LOCK			COMPONENTS			MATERIAL	
M22ZW			Housing			Poyamide	
M22ZW22			Cam			Steel zinc plated	

How to order:

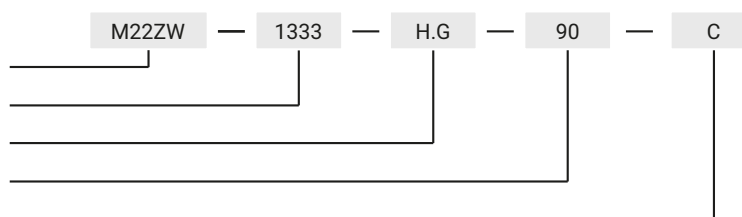
Type of lock

Key code

Height of cam H

The opening angle of (90°, 180°)

Finish



* possibility to make in another dimension
 H.G - the cam unbending dimension (H-locking height, G-group)

The lock is fitted with cams from the group: 15, 16, 19, 21, 35, 36, JK1-10018, JK2-10018, J-6000.01, J-6000.02, JK-1610.01, JZ-001 (pg. 1C-12 to 1C-23)