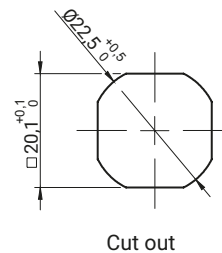
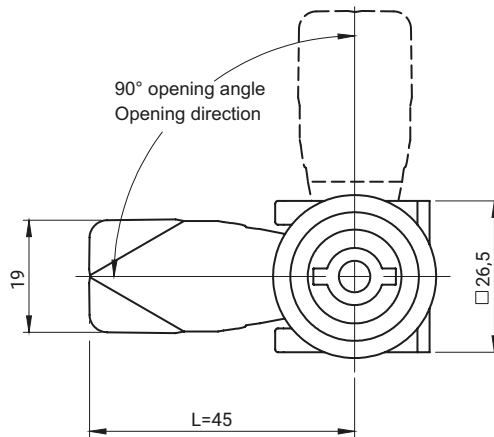
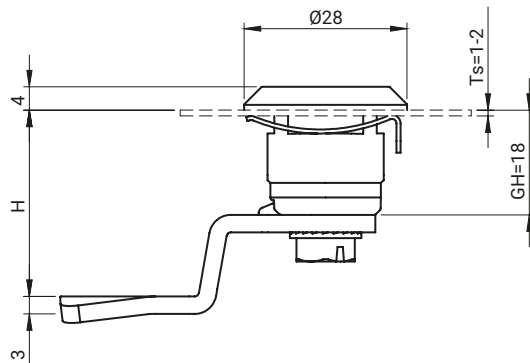


LH/RH

IP40

NEW



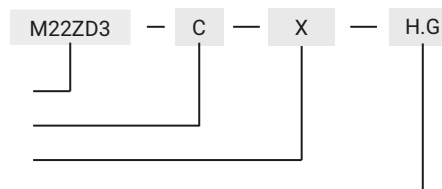
TYPE OF LOCK	COMPONENTS	MATERIAL	FINISH [C]	
			RAL9005	RAL7035
M22ZD3	Housing, Insert	Polyamide	07	08
	Fixing clip	Zinc plated steel	-	-

INSERTS [X]



How to order:

- Type of lock
- Housing finish / insert [C]
- Type of insert [X]
- The height of cam H



where:

- H - the cam unbending dimension
- G - cam group

The lock is fitted with cams from the group: 12, 14, 17, 17A, 18, 32, 34, JK1-16018, JK2-16018, J-6000.03, J-6000.04, JK-1610.01, JZ-002 (pg. 1C-10 to 1C-23)

* possibility to make in another dimension