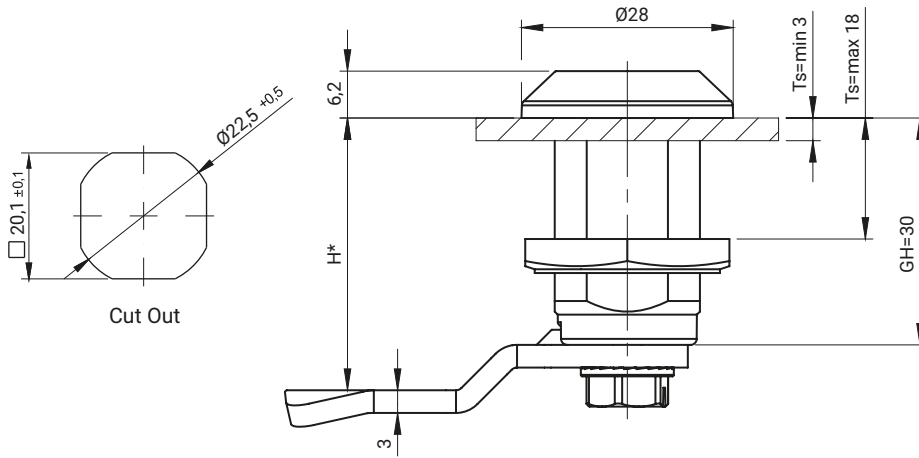
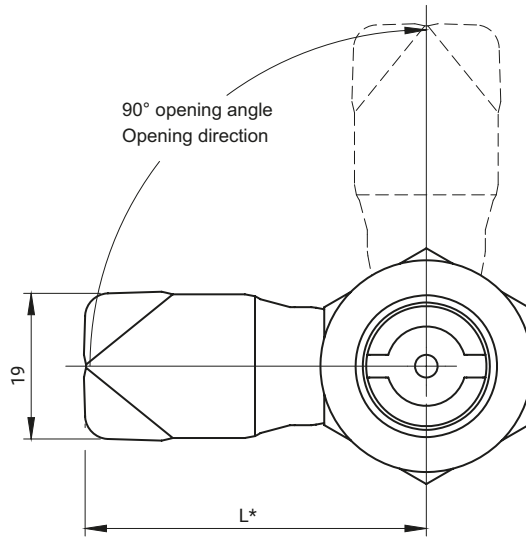




for stainless steel version



M22-30.02



M22-30.01

Additional protection lock is a "Blocade" (see page 2A-124, 126)

INSERTS [X]							FINISH [C]			
							Chrome	Nickel	RAL 9005	RAL 7035
D3	D5	T9	KW8	S	N	C9	01	02	04	05
TYPE OF LOCK						COMPONENTS		MATERIAL		
M22-30.01						Housing, insert		ZAMAK 5		
M22-30.02						Cam		Steel zinc plated		

How to order:

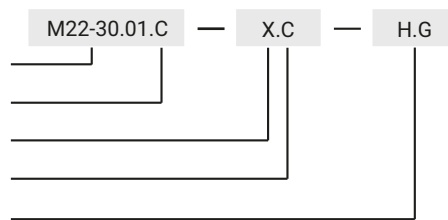
Type of lock

Housing finish

Type of insert

Insert finish

Height of cam H (1C-10 - 1C-23)



where:

H - the cam unbending dimension

G - cam group

Ts - door thickness

* possibility to make in another dimension

The lock is fitted with cams from the group: 12, 14, 17, 17A, 18, 32, 34, JK1-16018, JK2-16018, J-6000.03, J-6000.04, JK-1610.01, JZ-002 (pg. 1C-10 to 1C-23)