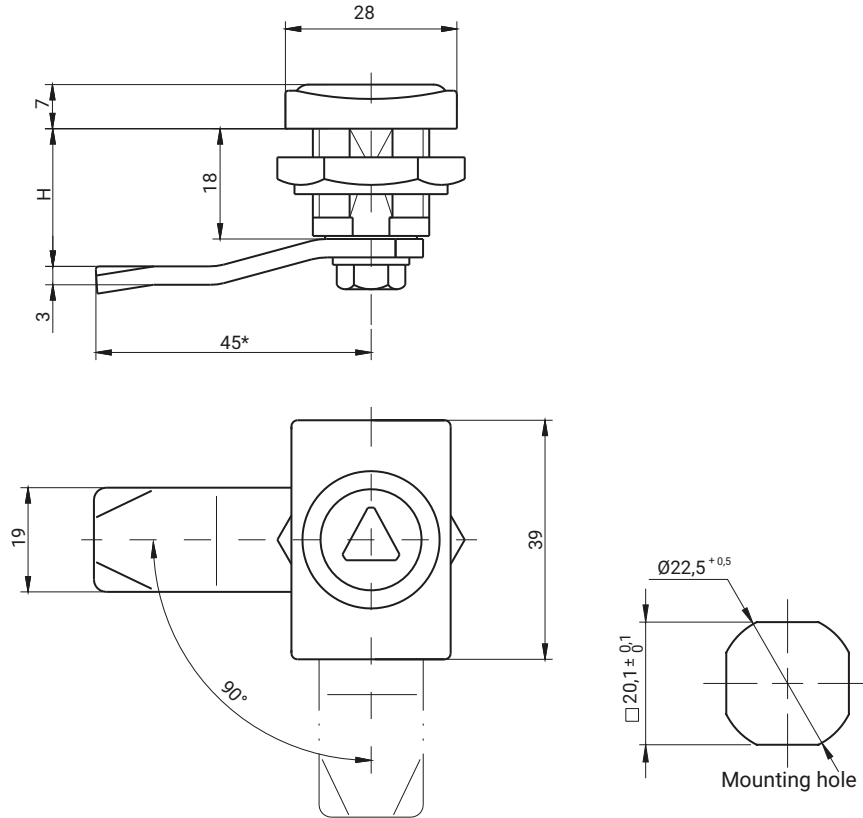


IP65

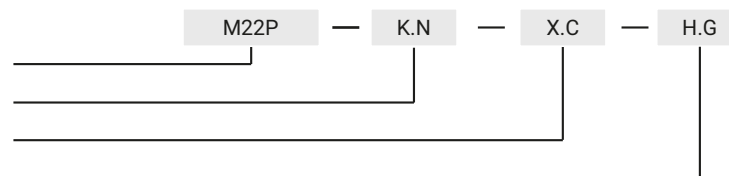


TYPE OF MATERIAL AND PROTECTIVE COATING [C]									
INSERT						TYPE HOUSING [K]			
ZAMAK 5						Polyamide		Polyamide	
Chrome	Nickel	Galvanized	RAL 9005	RAL 7035	No coating	RAL 9005	RAL 7035	RAL 9005	7035
01	02	03	04	05	00	07	08	07	08
THE TYPE OF THE NUT [N]									
	ZAMAK 5		Polyamide		Steel	Stainless steel			
						304	316		
Nut without grounding	11		12		13	14	15		
Nut with grounding	21		-		23	24	25		

TYPE OF THE MATERIAL OF THE INSERT	INSERTS [X]											
	D3	D5	T8	T9	T10	T11	T13	KW8	S	N	C9	HEX
ZAMAK 5	●	●	-	●	●	●	●	●	●	●	●	●
Polyamide	●	●	-	-	-	-	-	-	-	-	-	-

How to order:

Type of lock
 Type of body
 Type of insert
 Type of cam
 where:



C - type of the material and finishing of the surface
 N - type of nut
 H.G - the cam unbending dimension

Notice:

The lock is fitted with cams from the group: 15, 16, 19, 21, 35, 36, JK1-10018, JK2-10018, J-6000.01, J-6000.02, JK-1610.01, JZ-001 (pg. 1C-12 to 1C-23)