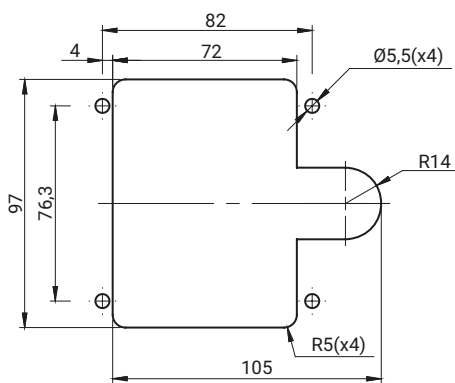
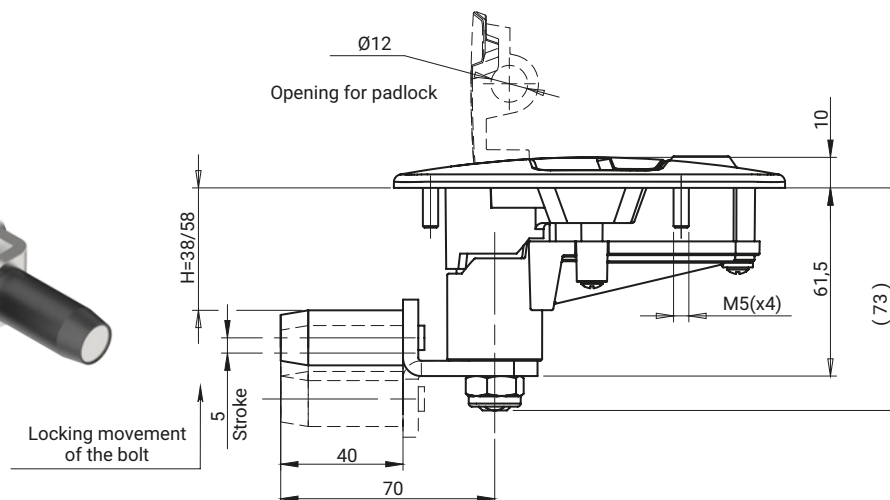
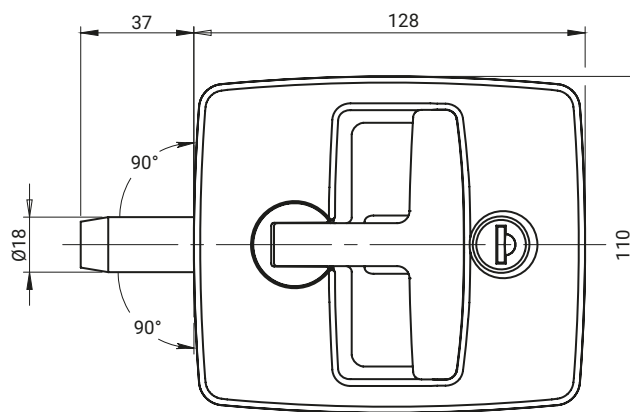


Lock 2.516.002 with fixed height cam H = 38 or H=58

NEW



Cut out



CATALOGUE NO.	COMPONENTS	MATERIAL	FINISH [C]		CYLINDER PROFILE	
			Chrome	RAL9005	Key code	
2.516.002	Housing, Lever Roller	Polyamide PA6 GF	-	07	Different code RK	1333
	Handle	ZAMAK 5	01	04		
	Lever Bushing	ZAMAK 5				
	Bolt	Stainless steel				

INSERTS [X]				FINISH [C]	
				Chrome	RAL9005*
D5	T9	KW8	S	01	04

How to order:

Catalogue no.

Key code / Type of insert [C]
where: C - type of insert surface finish

Housing finish [C]

Handle finish [C]

* other colours on request

