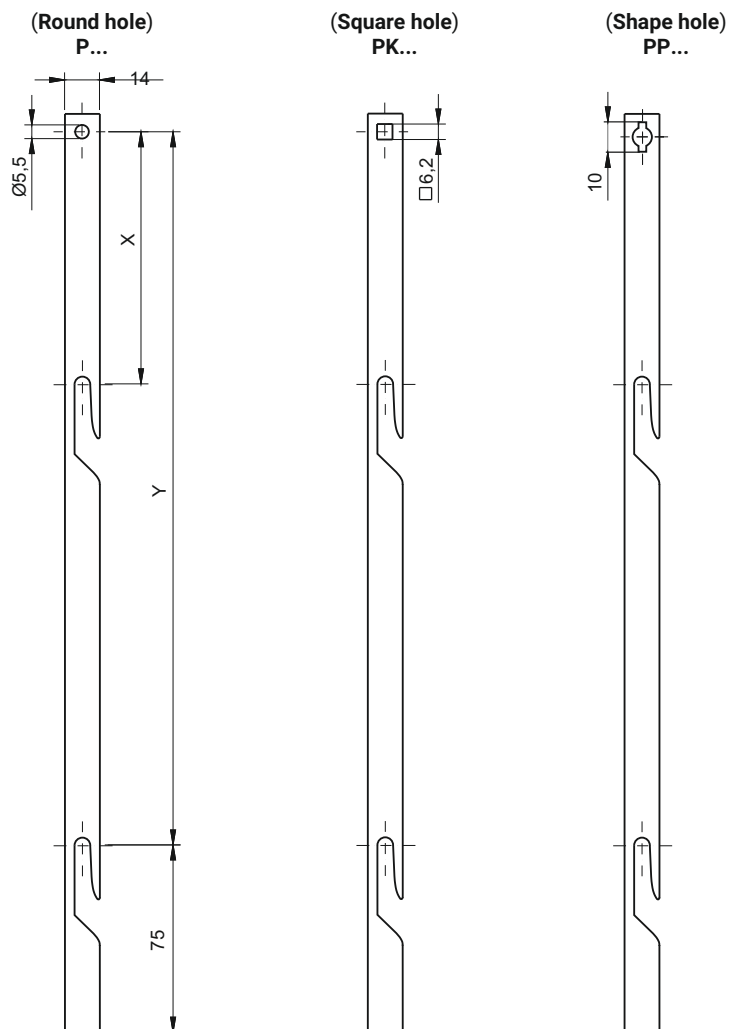
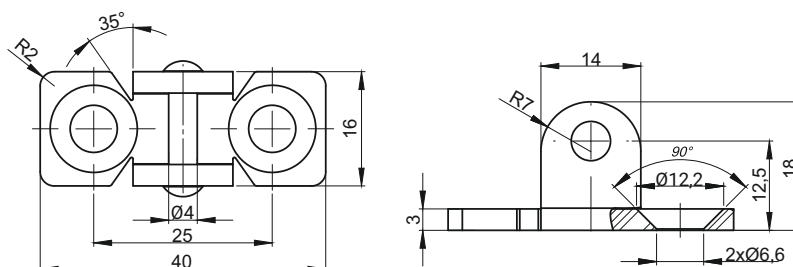


## FLAT ROD ver. C



## CATCH W314-70 (for Flat Rod ver. C - steel)



CATALOGUE NUMBER FLAT ROD VER. C			DOOR HEIGHT WD	DIMENSION OF THE FLAT ROD		DIMENSION TO DOOR CENTER		MATERIAL
ROUND HOLE	SQUARE HOLE	SHAPE HOLE		X	Y	C	D	
P390-210	PK390-210	PP38-210	800 - 1200	-	126	-	300	Steel zinc plated
P390-351	PK390-351	PP38-351	1200- 1600	-	276	-	450	
P490-601	PK490-601	PP48-601	1600 - 1900	101	526	275	700	
P490-751	PK490-751	PP48-751	1900 - 2200	101	676	275	850	
CAT. NUMBER		NAME		MATERIAL				
1C.907.004		Catch for flat rod ver. C		Steel zinc plated				