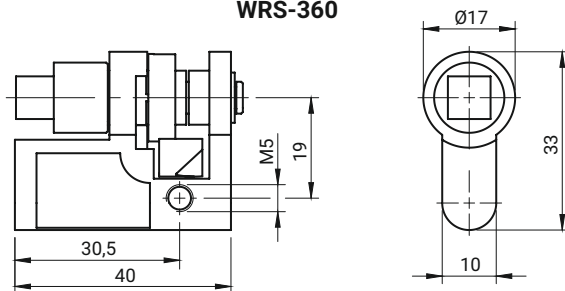


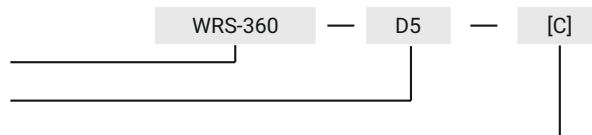
Shaped insert rotated by 360° WRS-360



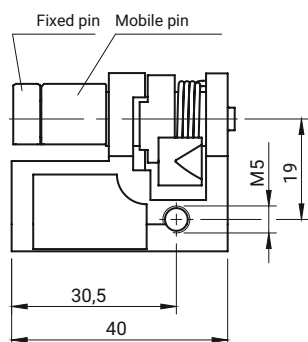
TYPE OF INSERT [X]														
D3	D5	T6	T7	T9	T10	T13i	KW6	KW7	KW8	S	N	C9	L	D13
CATALOGUE NO.		MATERIAL			FINISH [C]									
WRS-360-X		ZAMAK 5			Nickel 02		Galvanized 03							

How to order:

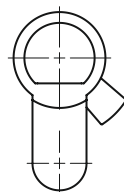
Type of lock
Type of insert
Finish



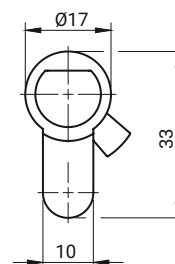
Self-locking shaped insert with difficult access WRS-D13.001 / WRS-D13.002



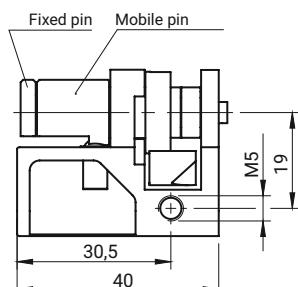
WRS-D13.001



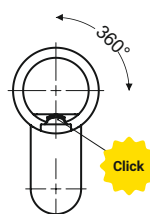
WRS-D13.002



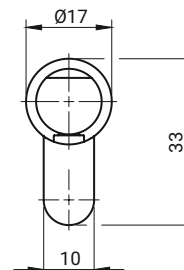
Shaped insert rotated by 360° with difficult access WRS-D13.003 / WRS-D13.004



WRS-D13.003



WRS-D13.004



Shaped inserts WRS-D13 are compatible only with specified lock types RS: RS420, RS520, RS420/U, RS520/U.

WRS-D13.003 and WRS-D13.004 allows the key to turn 360°, removing the key is possible only in the open position, open position is signalized by a slight click.

Recommended key for cylinders with difficult access - 2.KL-D13S.008 (pg. 2A-115).

CATALOGUE NO.	COMPONENTS	MATERIAL	FINISH [C]
WRS-D13.001	Housing	ZAMAK 5	Nickel
	Mobile pin	Steel zinc plated	-
WRS-D13.002	Fixed pin	Steel zinc plated	-
WRS-D13.003	Housing	ZAMAK 5	Nickel
	Mobile pin	Brass	-
WRS-D13.004	Fixed pin	Steel zinc plated	-