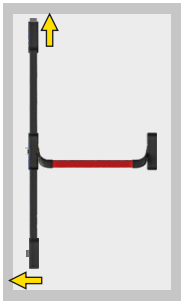
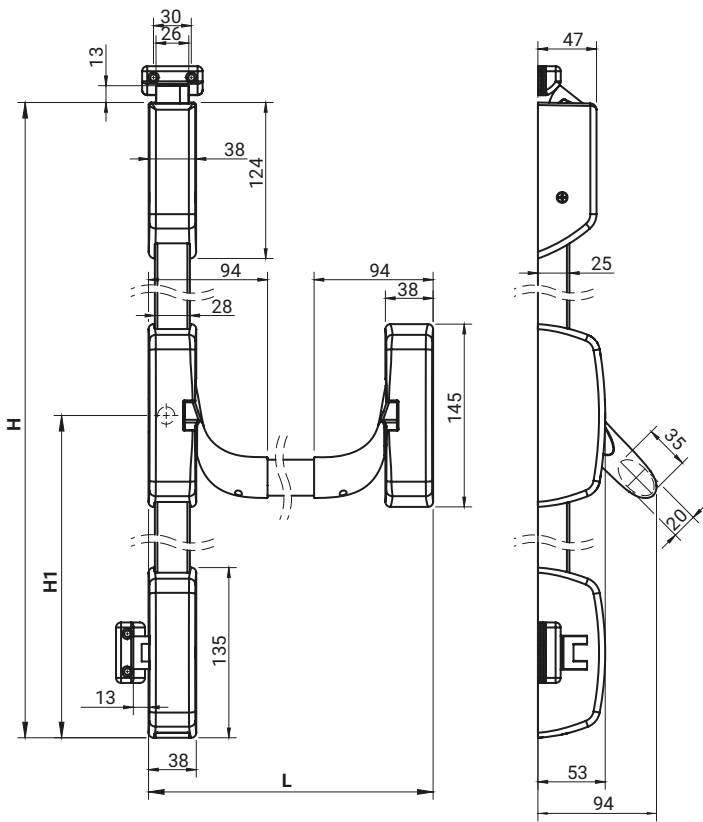


Anti-panic lock  
DOUBLE-POINT VERTICAL AND HORIZONTAL LATCH (top / side)



The set includes:

- central holder,
- vertical latch,
- horizontal latch,
- horizontal bar (state size L at order),
- upper and lower rod ( state dimension of H and H1 at order),
- catch with a set of spacers (x2)

Accessories to be ordered separately:

- external holder 1B.ZA.201

Housings of locks and catches, horizontal bar are made of ZAMAK;  
internal lock mechanism, rod - galvanized steel; bar, catch - powder-coated steel

CATALOGUE NUMBER	COMPONENTS	FINISH [C]		
		RAL 9005	RAL 7035	RAL 3020
1B.ZA.004	Central holder	04	05	-
	Latch			
	Catch			
	Horizontal bar	04	05	12

How to order:

Catalogue number

Finish for a central holder, latches and a catches

Closure width

Finish for a horizontal bar

Closure height

Height from the closure axis to the bottom latch

